

Fan Coils

Venkon





## The quietest on the market

This means that your new Venkon meets the expectations for a quiet working environment. Market-leading quiet and nonetheless outstanding outputs at higher speed ranges.

## Cutting-edge technology with KaControl

Achieve maximum energy efficiency with KaControl room automation. KaController with a push-turn dial or additional keys for quick access. Use as a single room controller or networked to a building management system.

Advantages 1 | 3





## EC technology:

### An ace up your sleeve

The new EC technology is a revolution in electronic drive technology. It considerably enhances DC motor technology even at low output ranges.

## Create space

Only Kampmann GmbH provides you with fan coil units that blend into the room and do not dominate it – in suspended ceilings, hotel casings or sill-line casings. We can produce a special solution to meet your needs – even in small quantities.

Advantages 2 | 3





## Hygiene certified

The Venkon conforms to VDI 6022, among other things with its closed-pore surfaces and optimum cleaning options combined with excellent filter qualities (with optional ePM10>50% (formerly M5) filter).

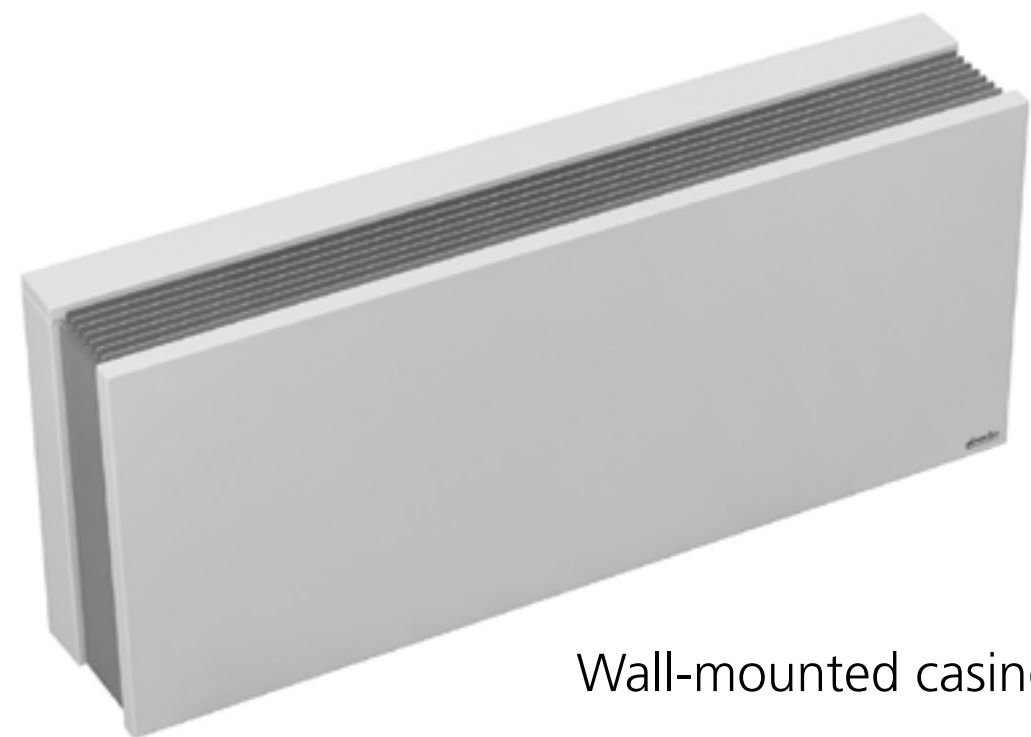
## Output you can rely on

Design using Venkons and reliably combat peak loads in high summer and in the depths of winter. The new motors with their progressive output curve offer a decisive buffer when it comes to extreme weather.

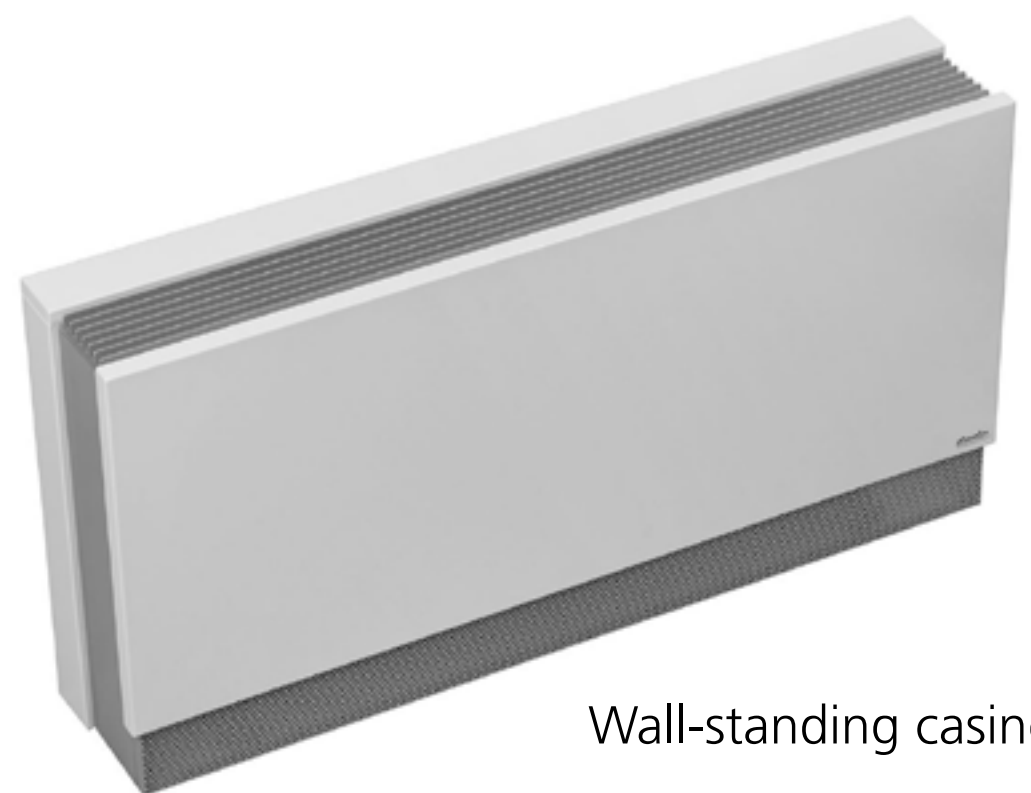




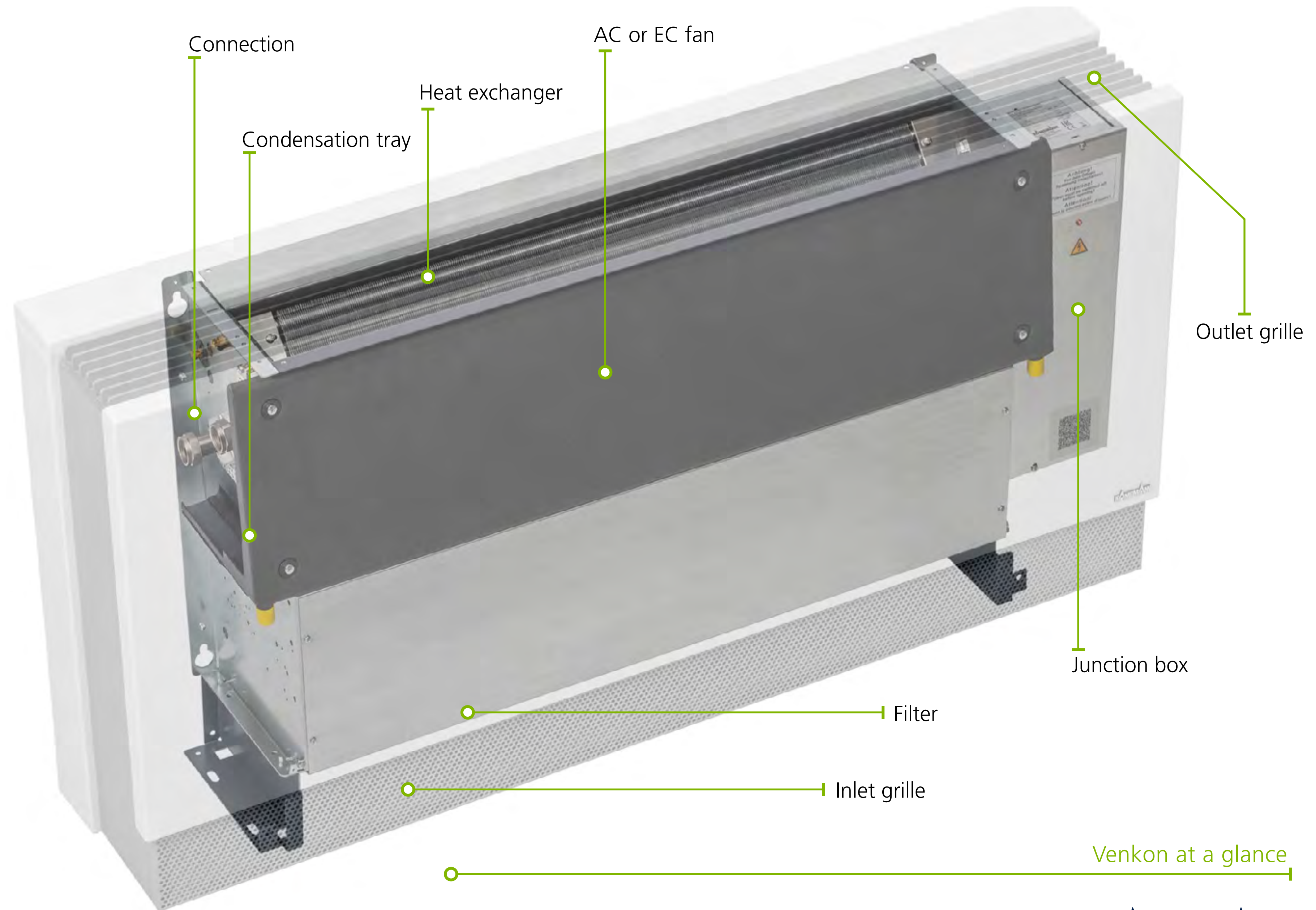
Ceiling casing



Wall-mounted casing



Wall-standing casing



Venkon at a glance



## High-performance heat exchanger

- > copper-aluminium
- > optimised air- and water-side flow for maximum heat and cold discharge





## Connection

- > with anti-twist device to avoid damage to the connector when screwing in the valves
- > different valve kits (optional) fixed to the unit and printed on the water side
- > actuators (optional) connected and wired to valve kit





## Condensation tray

- > can be simply and conveniently removed for maintenance and cleaning





## EC or AC fans

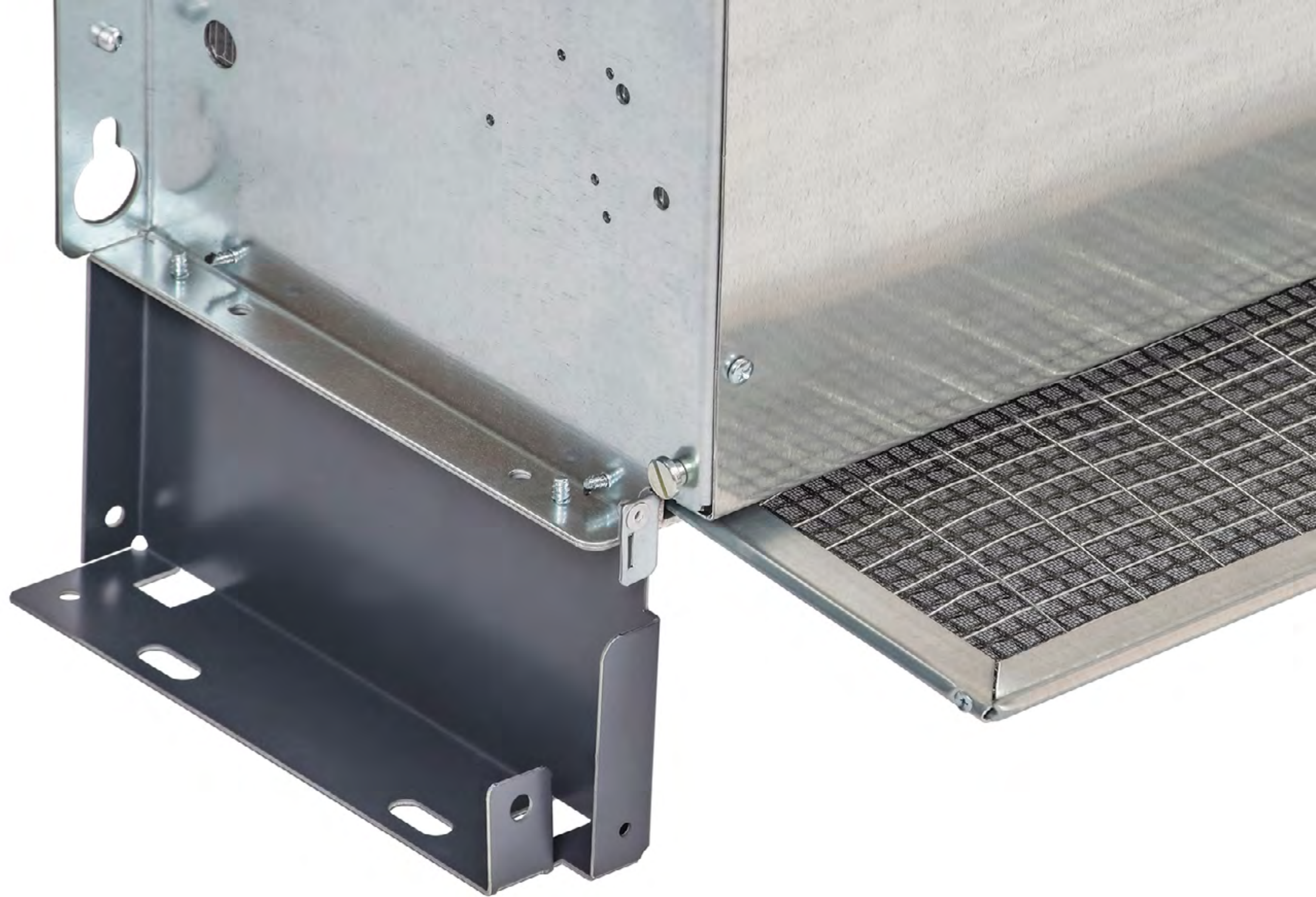
- > lowest noise levels at low speeds and high outputs at high speeds





## Filter

- > maintenance-friendly filter removal at each installation position
- > washable and hence recyclable filter



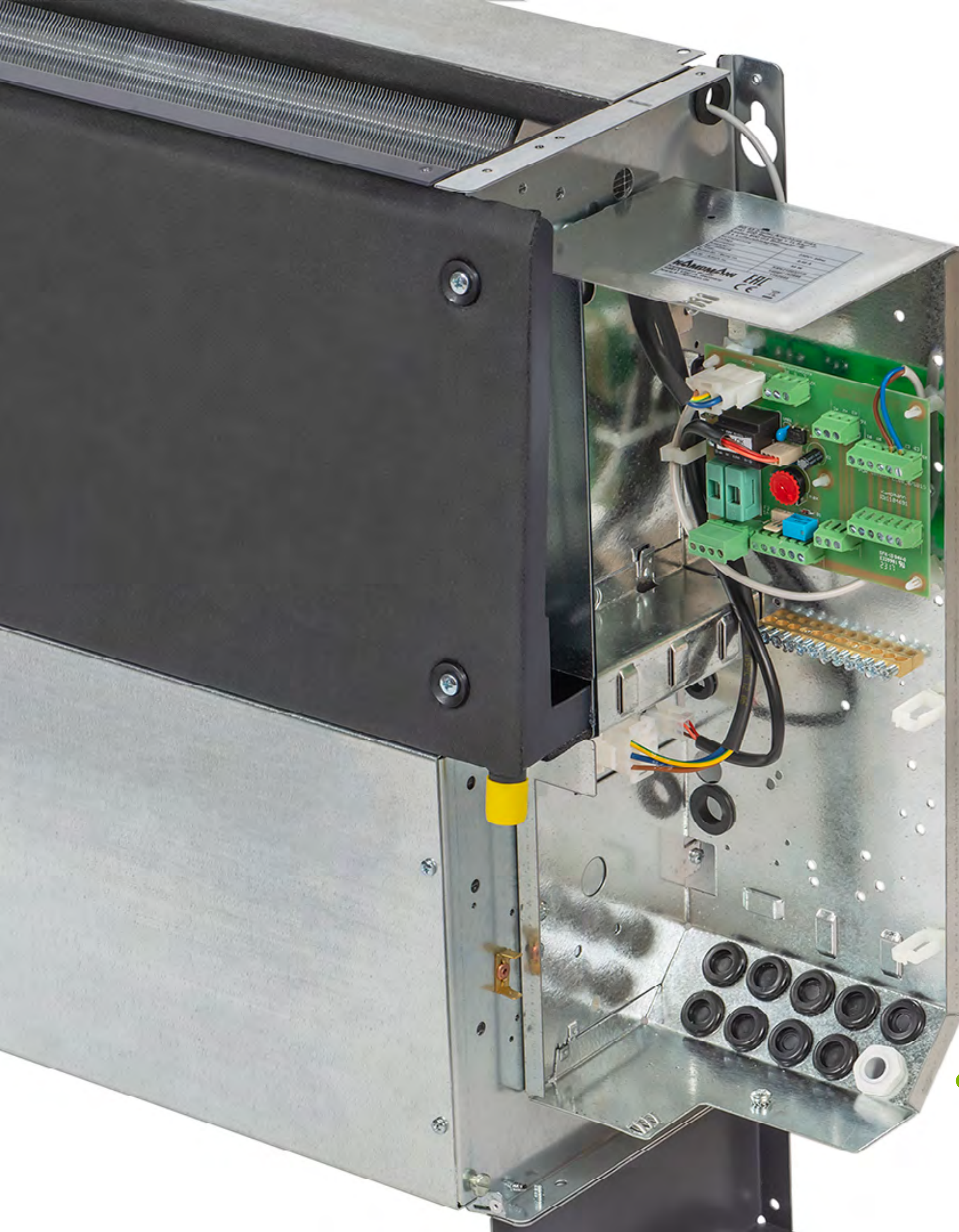


## Output grille

- > flow-optimised output behaviour by means of outlet grille
- > change of outlet air angle, can also be subsequently retrofitted



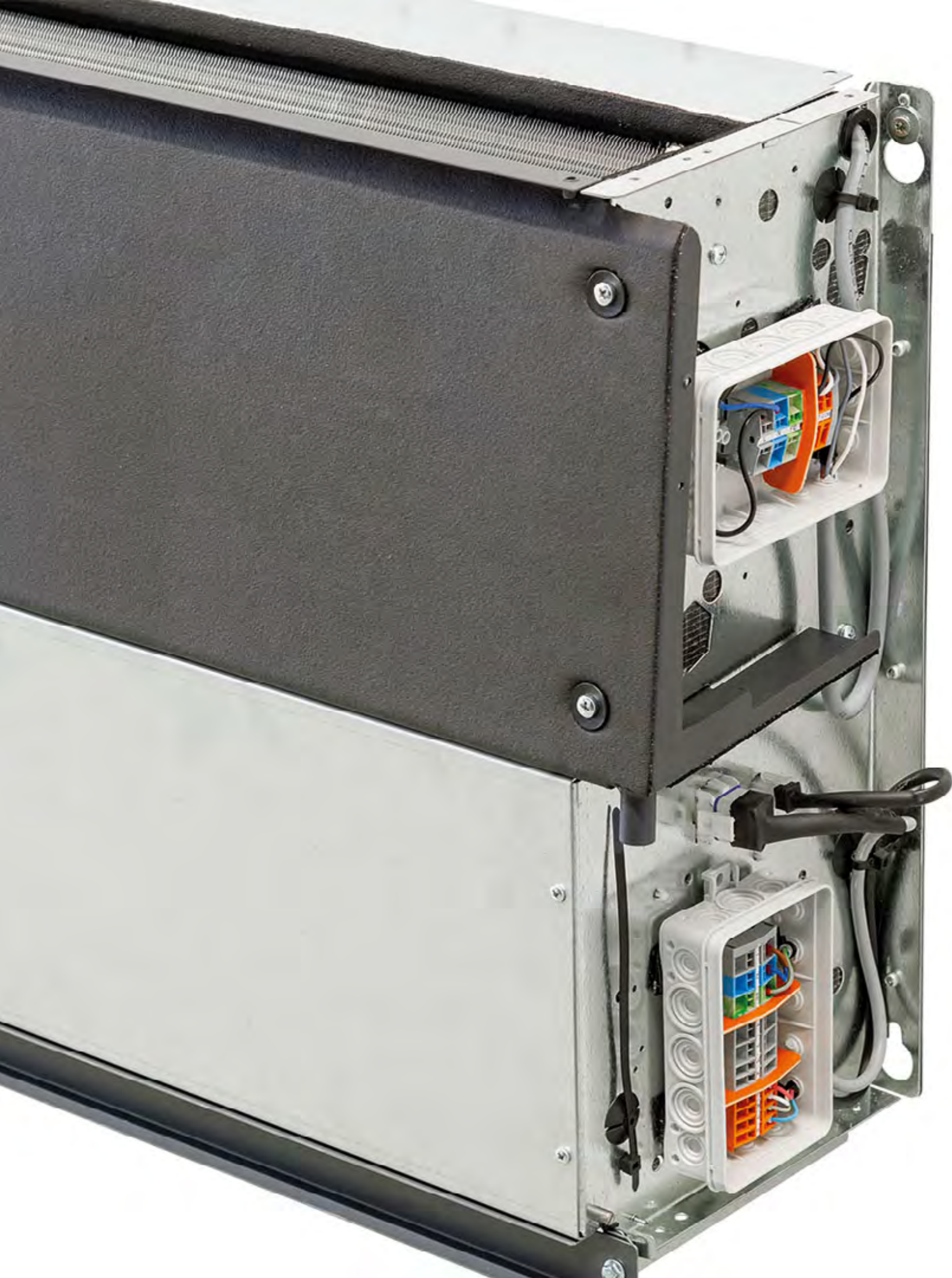




## Control configuration C1 with KaControl in the junction box

- > wired ready for connection
- > ease of access for maintenance by removable casing
- > also available as a remote control box
- > with 2.5 m long cable





## Electromechanical control model

- > wired ready for connection
- > ease of access for maintenance by removable casing
- > installation using Velcro strips for simple
- > removal and handling on site



## Inlet grille

- > simple installation and dismantling without a tool
- > in an attractive, slimline design





## KaControl room automation

- > factory fitted KaControl technology to set up complete networked systems based on a KaControl control system
- > 0 – 10 V analogue input to control the fan and valve via a single data point
- > room control unit design with intuitive user guidance
- > integrated timer programme



### Electromechanical control: surface-mounted room thermostat

- > 3-stage or automatic fan control
- > Heating and/or cooling in 2-pipe and 4-pipe applications



### Climate controller

- > high-quality glass surface with capacitive keys
- > parallel operation of 2 units is possible
- > integrated timer program optionally with Modbus RTU interface
- > 2- and 4-pipe applications



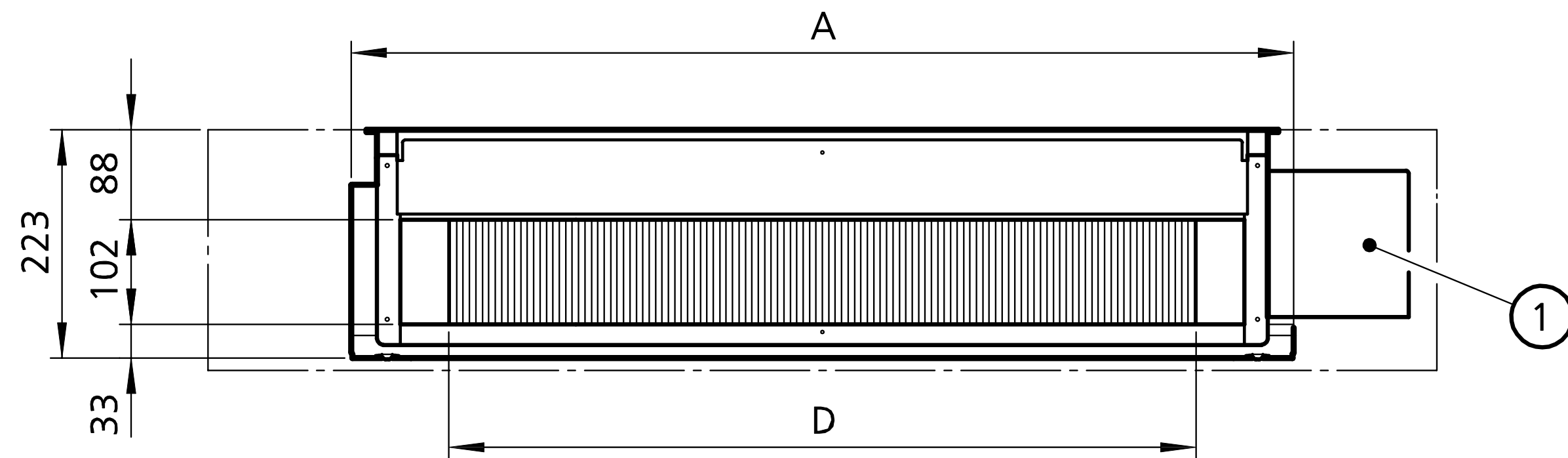
Size	Model	Cooling output <sup>1)</sup>		Heat output <sup>2)</sup>		Air flow volume	Sound pressure level <sup>3)</sup>
		2-pipe	4-pipe	2-pipe	4-pipe		
		[kW]	[kW]	[kW]	[kW]		
BG 61	AC	0,84 – 3,27	0,79 – 3,08	1,91 – 7,74	1,54 – 4,99	125 – 530	<20 – 49
	EC	0,86 – 3,42	0,81 – 3,23	1,95 – 8,24	1,57 – 5,28	135 – 560	20 – 53
BG 63	AC	1,57 – 4,52	1,43 – 4,10	3,66 – 10,65	2,89 – 7,04	240 – 705	<20 – 47
	EC	1,18 – 5,26	1,07 – 4,77	2,86 – 12,82	2,40 – 8,31	190 – 850	<20 – 50
BG 66	AC	2,23 – 7,67	1,86 – 6,40	5,12 – 17,74	4,01 – 11,27	350 – 1230	25 – 50
	EC	1,93 – 8,54	1,61 – 7,13	4,54 – 20,3	3,67 – 12,71	315 – 1405	21 – 54
BG 67	AC	3,12 – 10,19	2,72 – 8,91	7,09 – 23,21	5,44 – 14,55	460 – 1510	26 – 50
	EC	2,28 – 11,26	1,99 – 9,84	5,45 – 26,2	4,5 – 16,22	355 – 1700	<20 – 53

<sup>1)</sup> Cooling outputs at LPCW 7/12 °C, t<sub>L1</sub> = 27 °C and 50 % rel. humidity

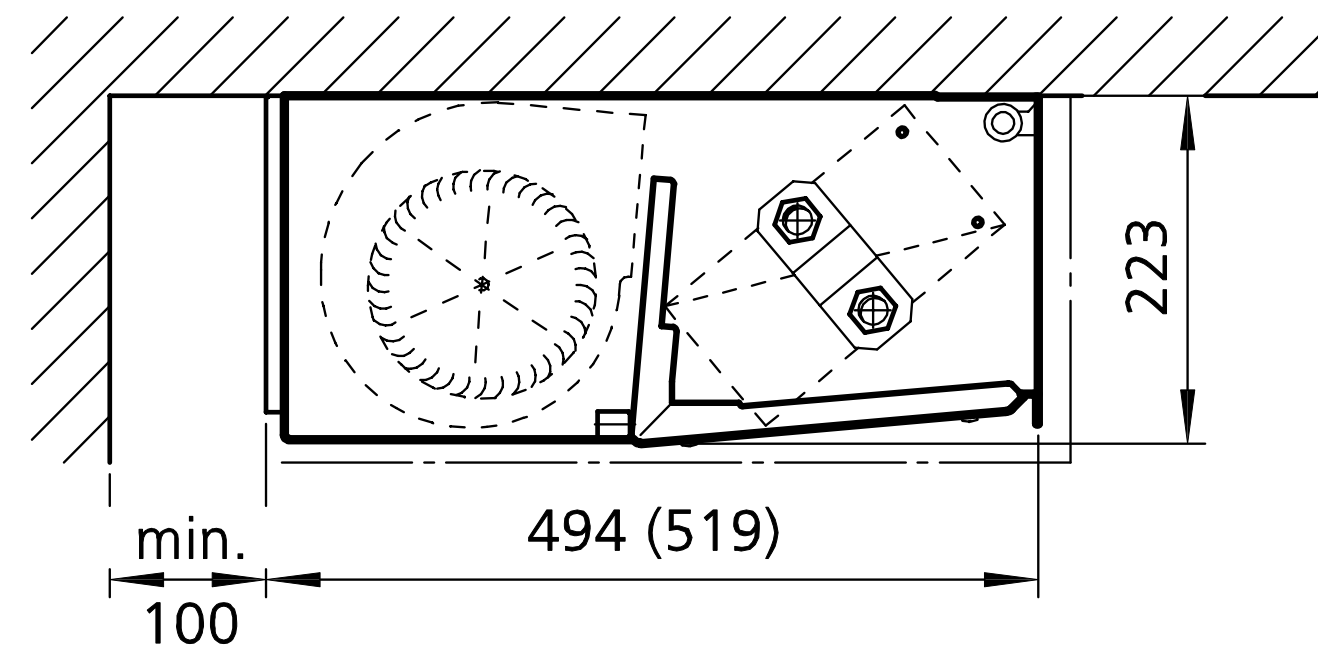
<sup>2)</sup> Heat outputs at LPHW 75/65 °C, t<sub>L1</sub> = 20 °C

<sup>3)</sup> Sound pressure data: room size 100 m3, reverberation time 0.5 seconds, sound absorption 8 dB(A)



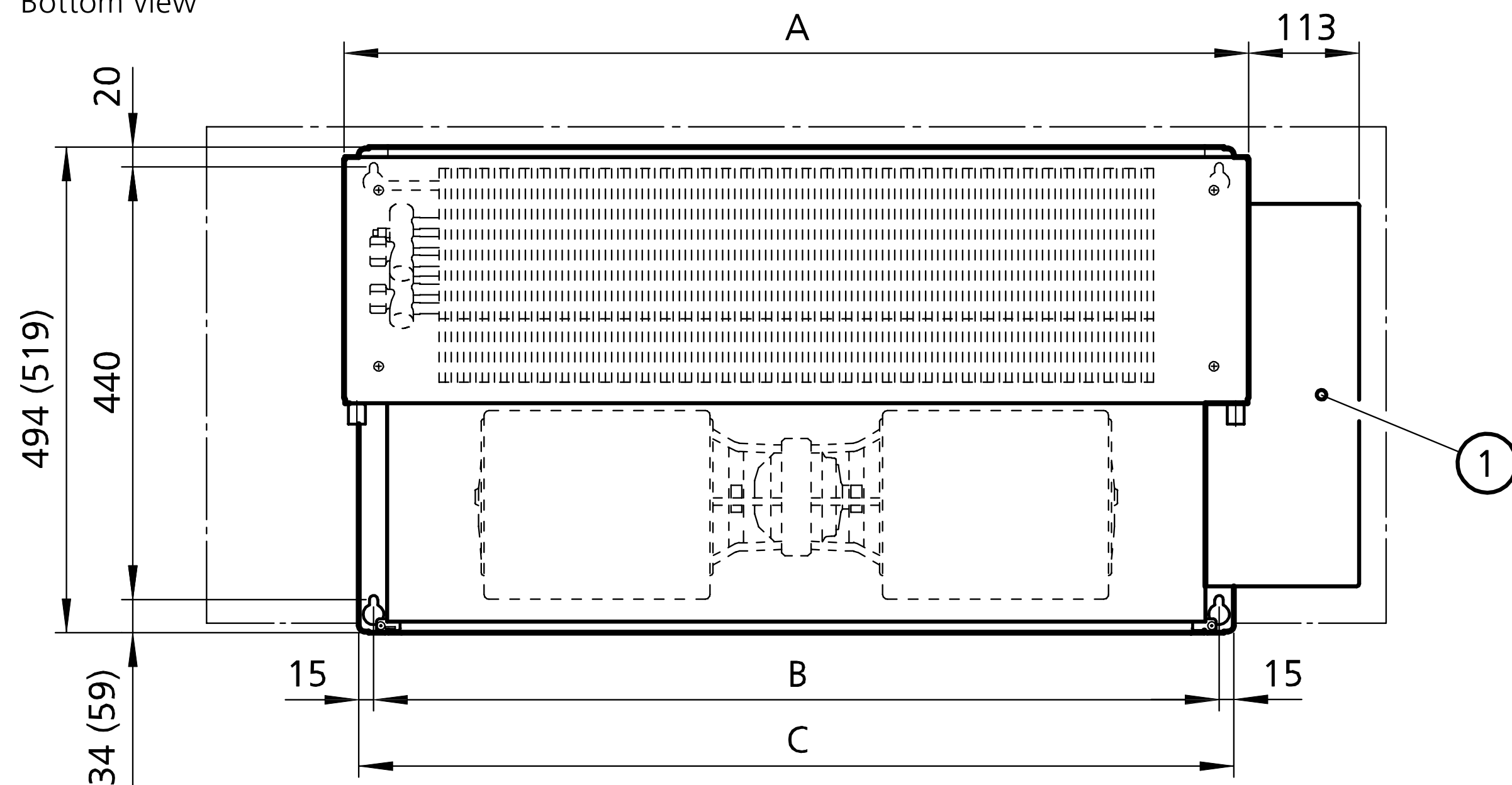


Front view



Side view

Bottom view

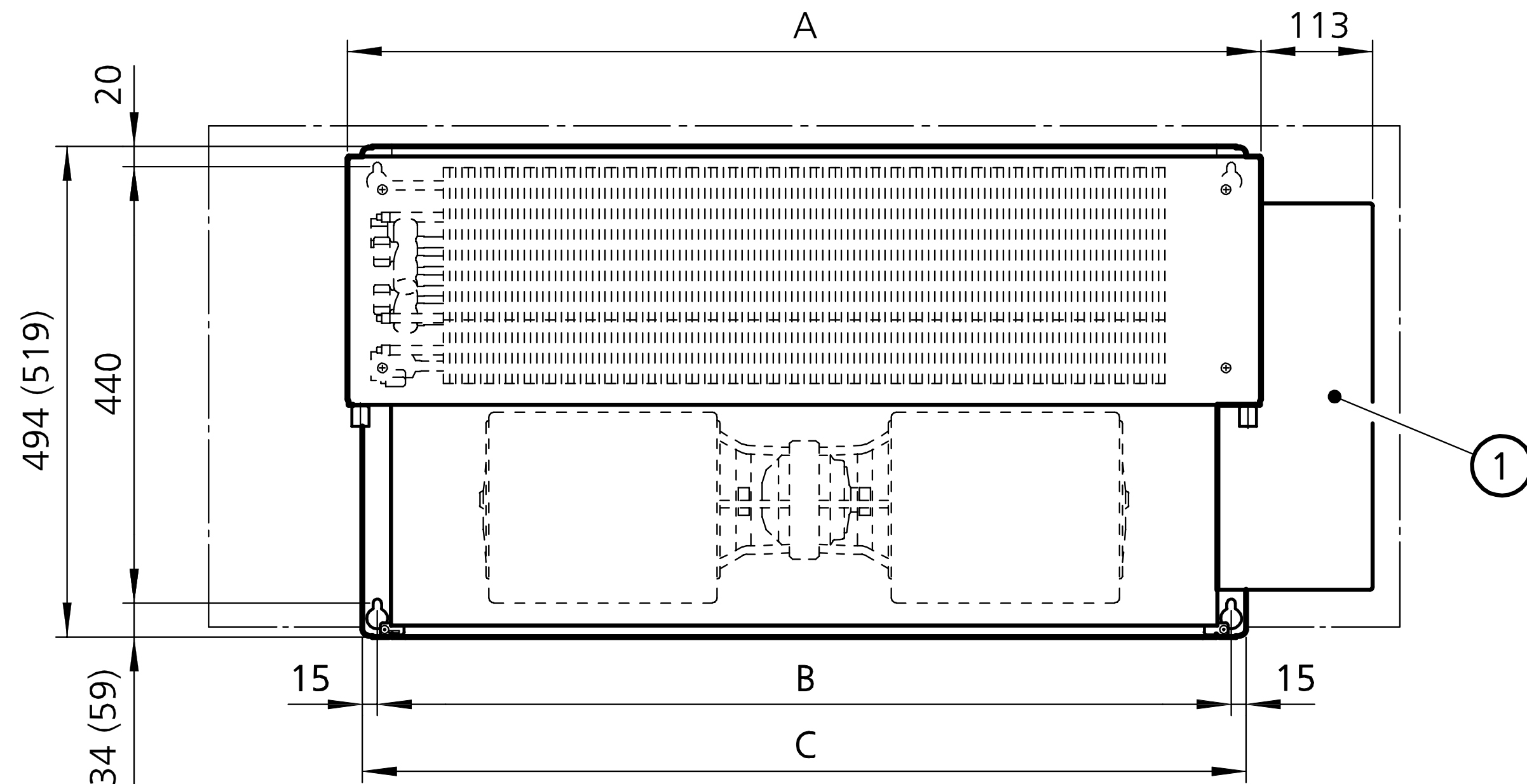


Dimensions in brackets = model with cassette filter ePM10>50% (M5) or ePM1>50% (F7)

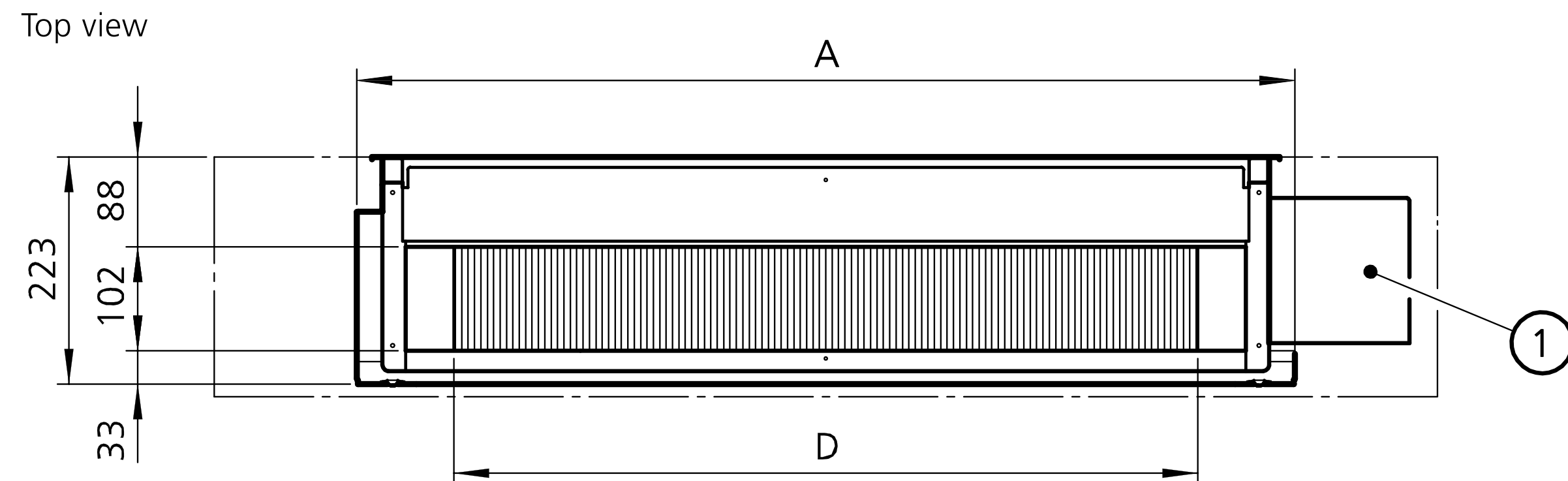
- ① There is no need for EC1M control with electromechanical or external control model

Size	A	B	C	D
	[mm]	[mm]	[mm]	[mm]
61	625	560	590	431
63	925	860	890	731
66	1375	1310	1340	1181
67	1725	1660	1690	1531

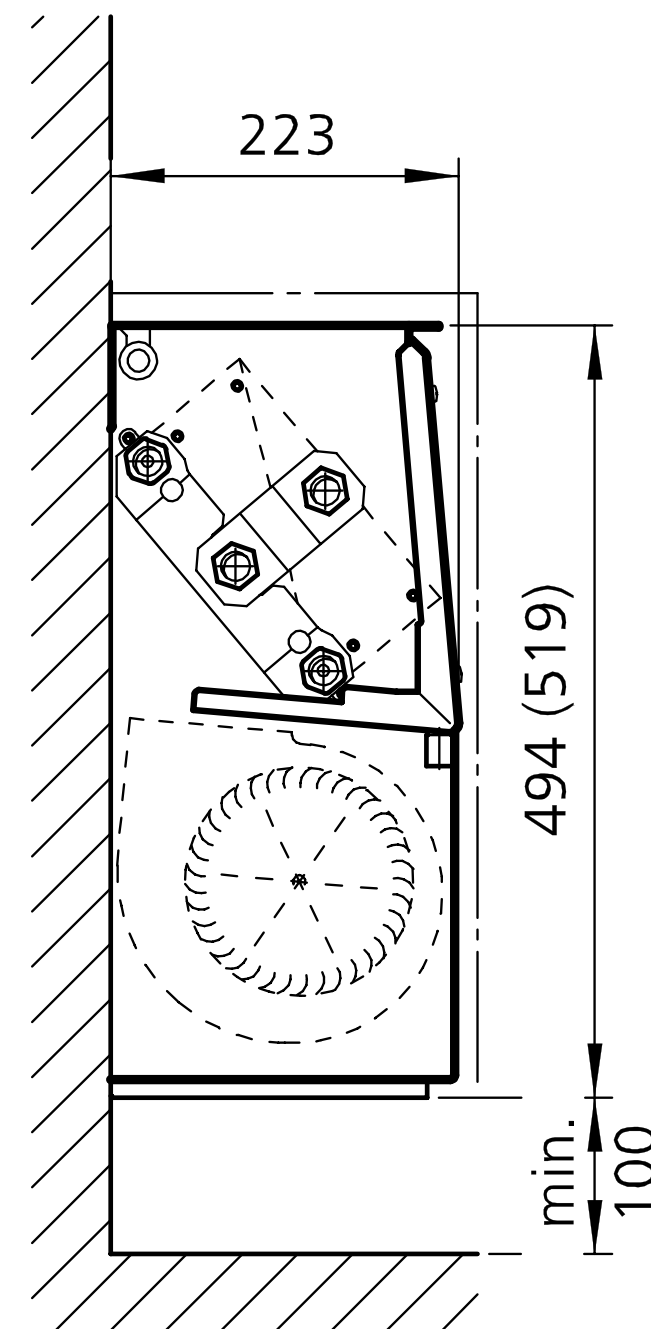




Front view



Top view



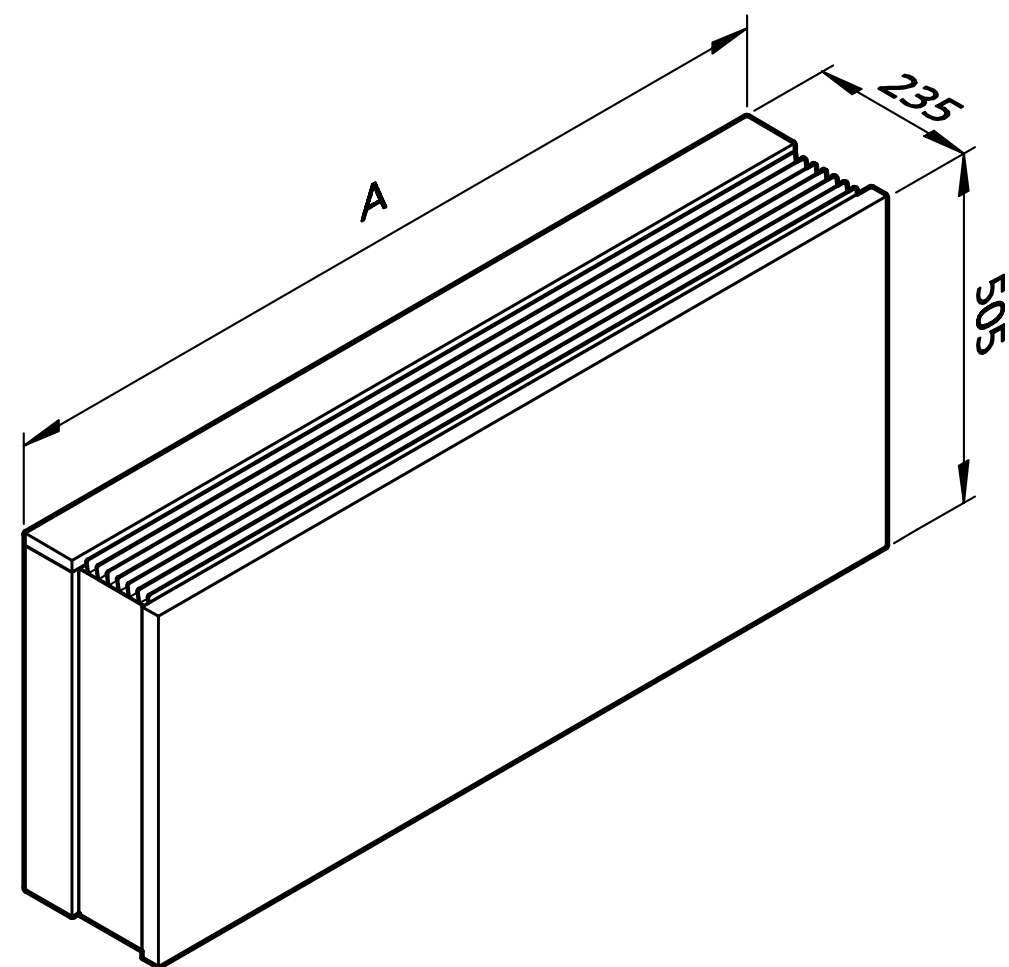
Side view

Dimensions in brackets = model with cassette filter ePM10>50% (M5) or ePM1>50% (F7)

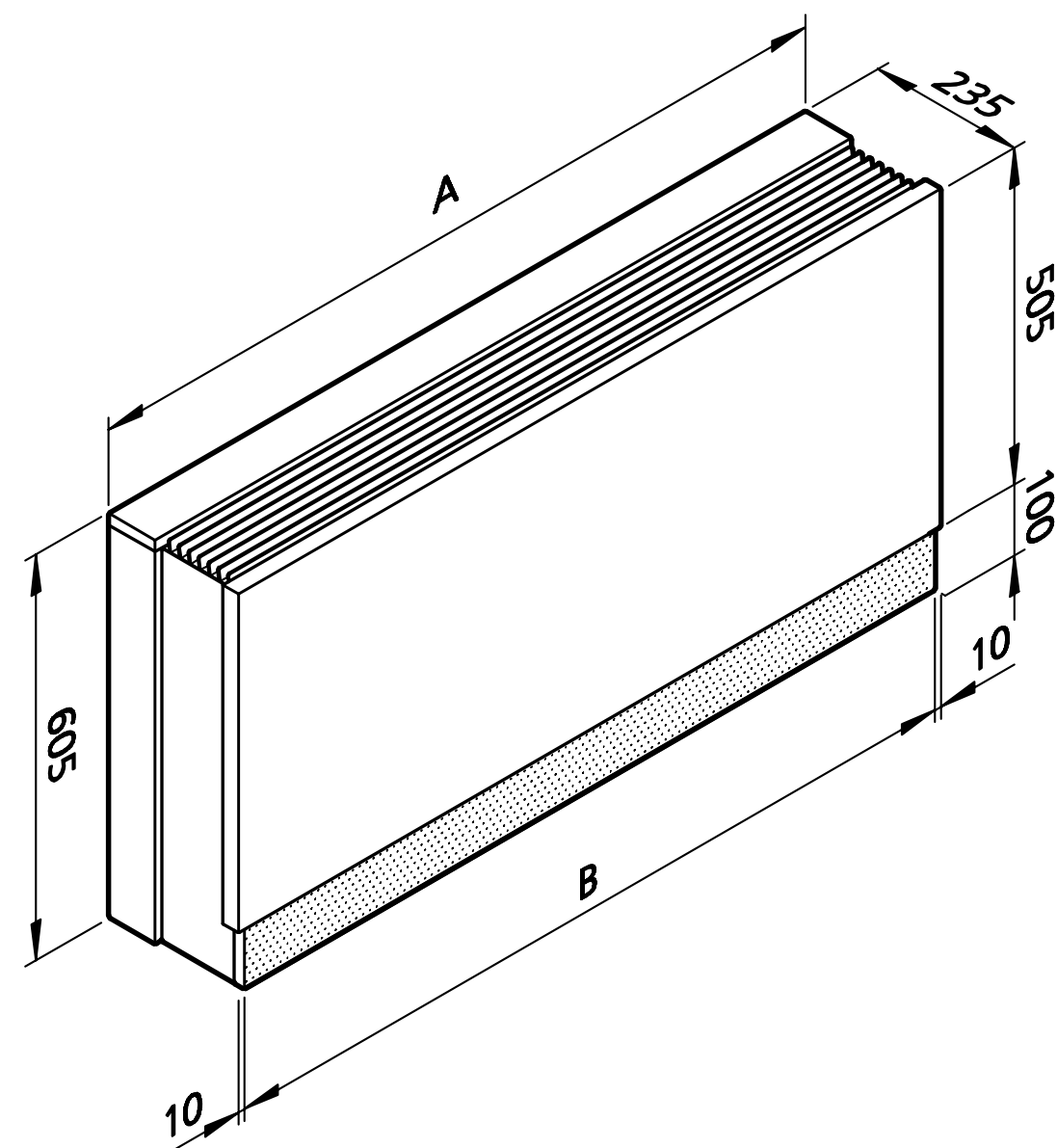
- ① There is no need for EC1M control with electromechanical or external control model

Size	A	B	C	D
	[mm]	[mm]	[mm]	[mm]
61	625	560	590	431
63	925	860	890	731
66	1375	1310	1340	1181
67	1725	1660	1690	1531

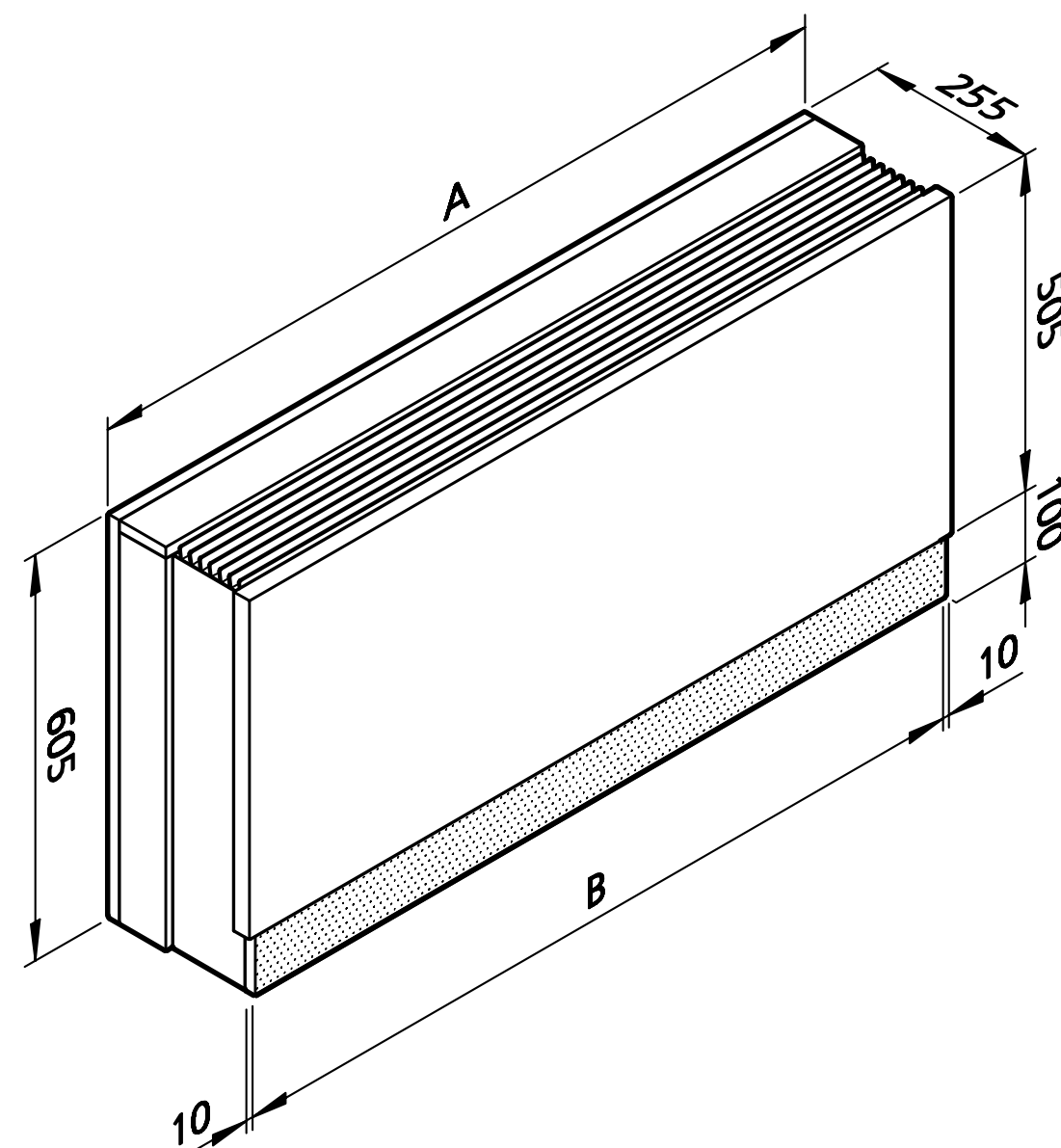




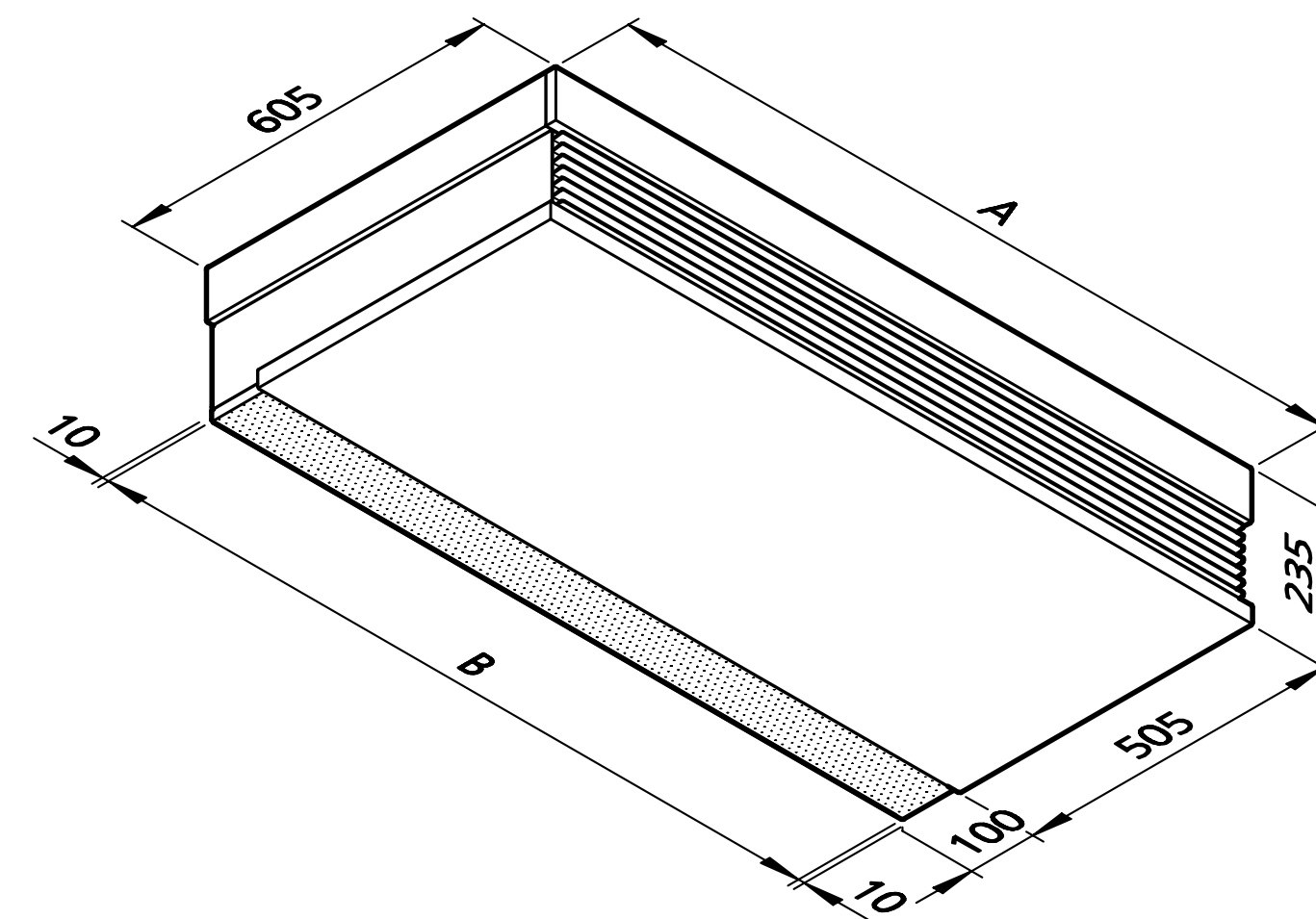
Casing, wall-mounted  
without inlet grille



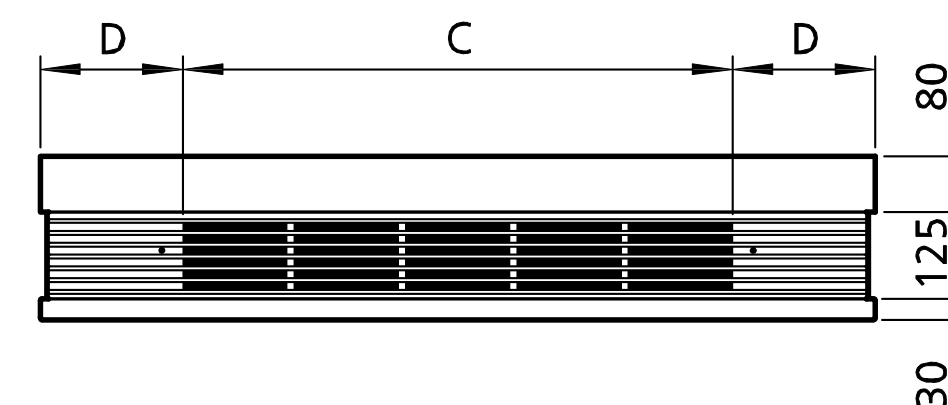
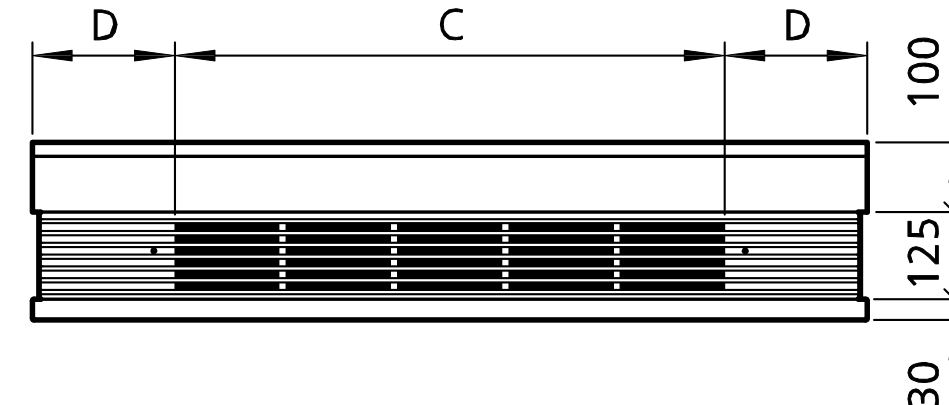
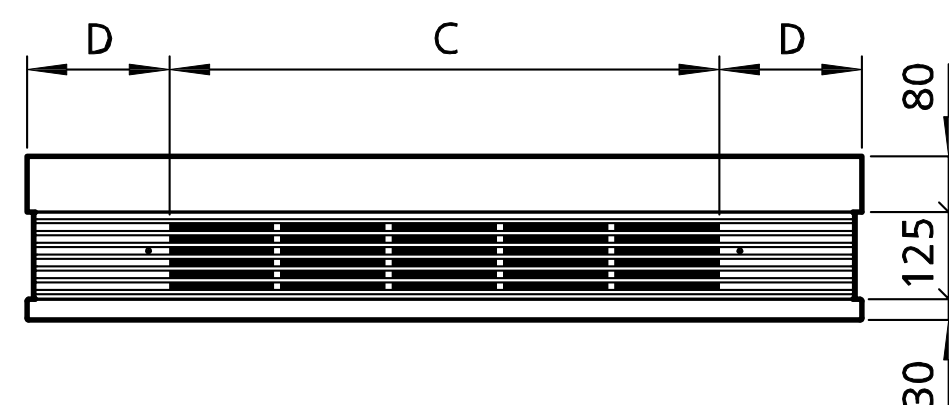
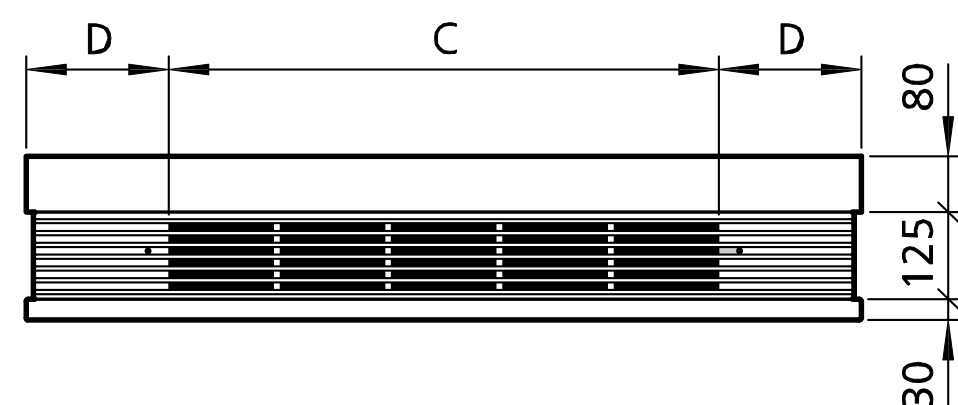
Casing, wall-mounted  
with inlet grille



Free-standing casing  
without air inlet grille with rear panel



Casing, ceiling-mounted  
with inlet grille



Size	A	B	C	D
	[mm]	[mm]	[mm]	[mm]
<b>61</b>	900	880	470	215
<b>63</b>	1200	1180	790	205

Size	A	B	C	D
	[mm]	[mm]	[mm]	[mm]
<b>66</b>	1650	1630	1270	190
<b>67</b>	2000	1980	1590	205





## Benefits for you!

Kampmann offers you the following service benefits:

- > on-site consultation
- > system solutions
- > diverse sampling
- > planning support
- > detailed discussions
- > measurement assistance
- > training
- > After Sales Service

Find your contact person here:  
**[Kampmanngroup.com/contact](https://kampmanngroup.com/contact)**

Contact